

Five years later, the sign design on Sanibel proves that no island is an island.

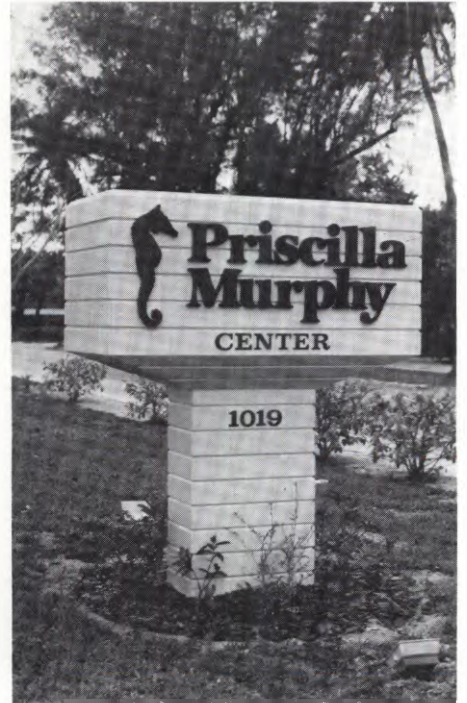
# Signs of Sanibel Island: Revisited



Five years ago, the very first issue of SignCraft was mailed to a handful of sign artists across the country. In it were features of the work of veteran sign artist Bob Seelander, cardwriter Fran Alrich, and the signs of Sanibel Island. In this issue, we take another look at the sign-work on this southwest Florida barrier island.

Sanibel — and Captiva, its sister island — have become even more of the resort community described back in 1980. Inevitably such areas make for interesting signage. Since there is usually a high turnover among tourist-oriented businesses, signs may change frequently.

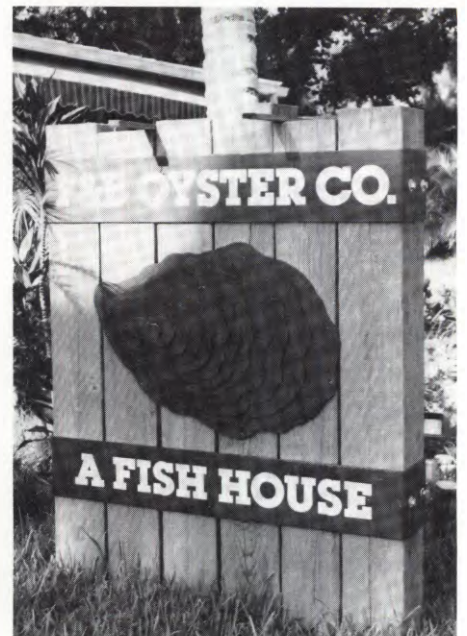
Most of the signs are done by sign



Design: Pete Smith, Smith Radigan Ross  
Fabrication: Vince Brodeur



Willie Compton, Thetan Crafts, Sanibel





Ernie Fernandez, Ernie's Signs, Bonita Springs, FL



Design: Pete Smith, Smith Radigan Ross, Fabrication: Willie Compton, Sanibel



Design: Pete Smith, Smith Radigan Ross, Sanibel





Larry Jones, Environmental Graphics, Ft. Myers, FL

artists on the island or nearby cities on the mainland. (One of the island's sign artists, Vince Brodeur, is featured in this issue.) Where possible, we have noted the shop that produced the signs pictured here. In some cases, design has been handled by a graphic designer.

All in all, Sanibel and Captiva have a healthy supply of interesting, creative signs. Any sign artist who has been among the estimated 125,000 people who visit the islands each year will vouch for that. •SC



Detail: Lion's Paw



Design: Pete Smith, Smith Radigan Ross, Sanibel Fabrication: Vince Brodeur, Sanibel



Ernie Fernandez, Ernie's Signs, Bonita Springs, FL



Design: Pete Smith, Smith Radigan Ross, Sanibel Fabrication: Vince Brodeur, Sanibel