

Revisited: Signs of Sanibel Island

Every five years, SignCraft does a “sign tour” of the island

The “cover story” of that slim, 20-page first issue of *SignCraft* featured the “Signs of Sanibel Island,” a coastal resort island about thirty minutes from *SignCraft*’s home in Fort Myers. Every five years since, we’ve returned to the island to share some of the current signs with our readers and mark another anniversary.

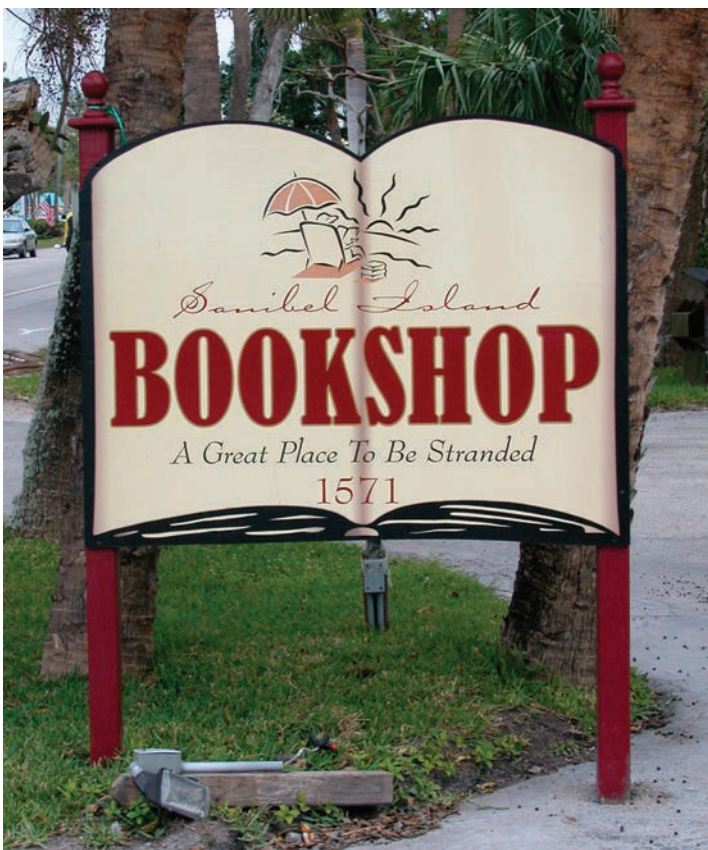


On August 13, 2004, Hurricane Charlie

scraped along the island with winds of up to 170mph—on its way to nearby Punta Gorda. Four hours later, many of the signs of Sanibel were history.

The island is rebuilding. Hundreds of hotel rooms and condos are still uninhabitable, though most will be restored by this coming fall. Along with roofs and landscaping, many signs have been replaced or restored.

So, it’s time for another anniversary, and there’s still plenty of nice sign work to see. Here’s a sampling of the work we saw on a recent trip out to this tropical barrier island. •SC



Sabel Signs, Ft. Myers, Florida



Island Designs, Ft. Myers, Florida



Sabel Signs, Ft. Myers, Florida



Island Designs, Ft. Myers, Florida



Sabel Signs, Ft. Myers, Florida



Landl Construction, Sanibel Island, Florida



This sign, like others on the island, still shows the wrath of Hurricane Charlie.